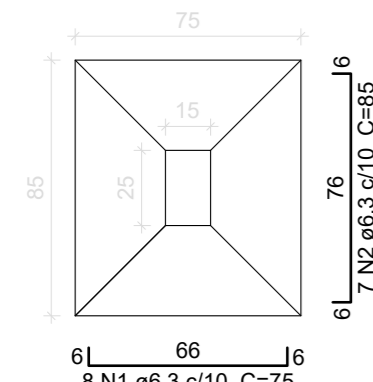
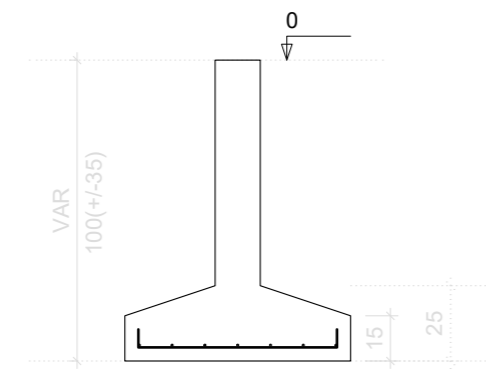


S1=S7  
PLANTA  
ESC 1:25

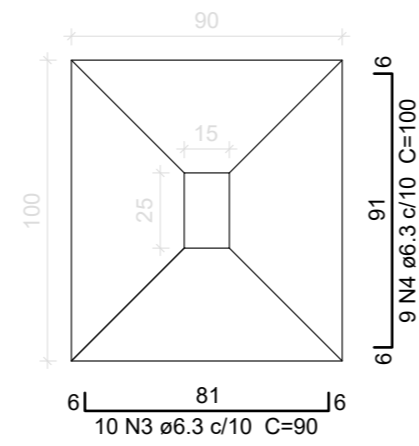


Solo com capacidade de suporte > 1.20 kgf/cm<sup>2</sup>

CORTE  
ESC 1:25

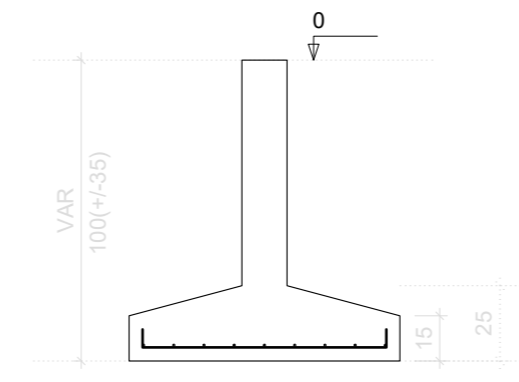


S2=S12  
PLANTA  
ESC 1:25

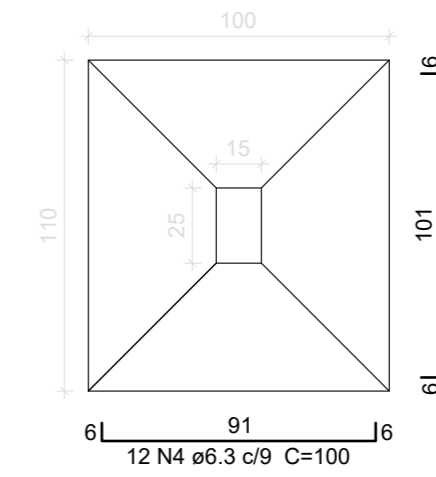


Solo com capacidade de suporte > 1.20 kgf/cm<sup>2</sup>

CORTE  
ESC 1:25

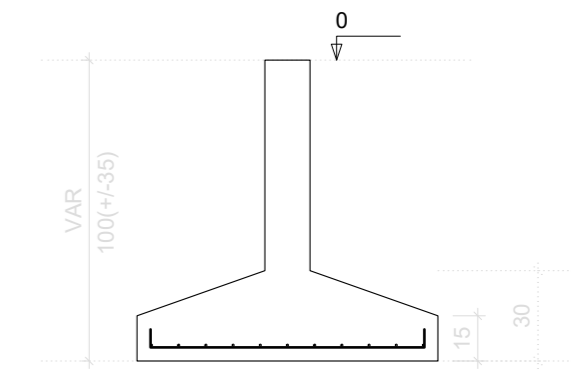


S3=S4=S8=S9=S10=S11  
PLANTA  
ESC 1:25

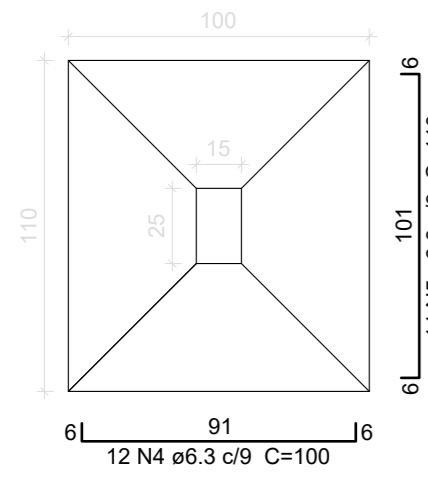


Solo com capacidade de suporte > 1.20 kgf/cm<sup>2</sup>

CORTE  
ESC 1:25

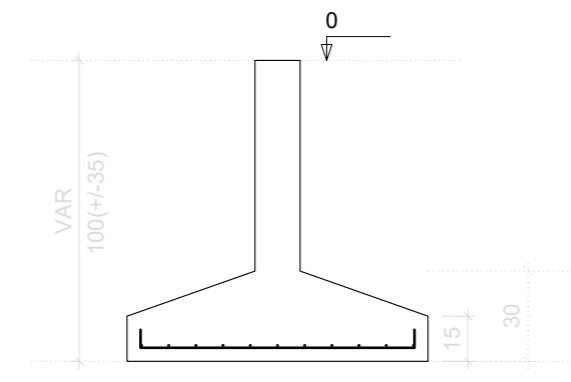


S5  
PLANTA  
ESC 1:25

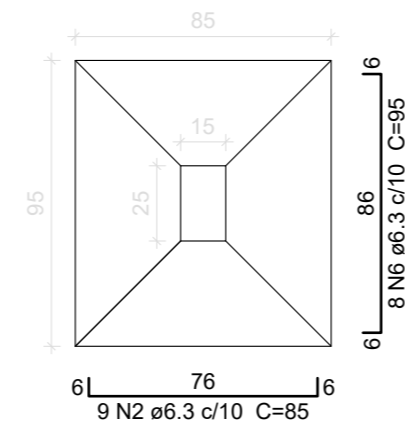


Solo com capacidade de suporte > 1.20 kgf/cm<sup>2</sup>

CORTE  
ESC 1:25

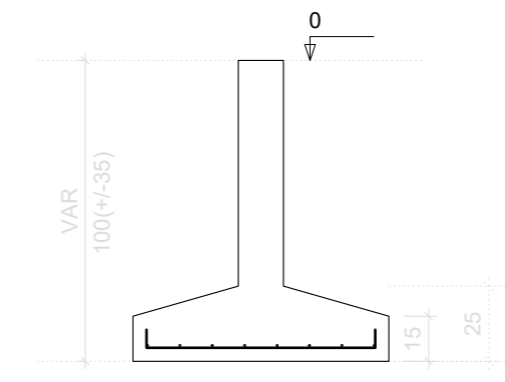


S6  
PLANTA  
ESC 1:25



Solo com capacidade de suporte > 1.20 kgf/cm<sup>2</sup>

CORTE  
ESC 1:25

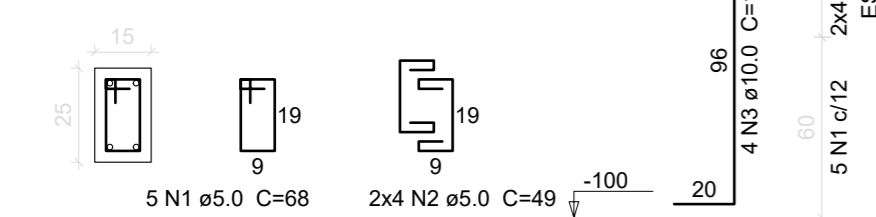


## PROJETO ESTRUTURAL

P1=P2=P3=P4=P7=P8=P9=P10=P11=  
=P12

TÉRREO - L1

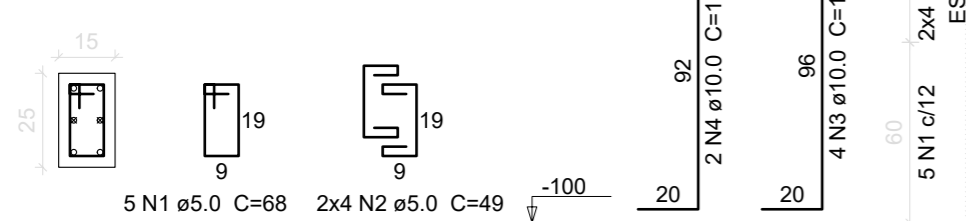
SEÇÃO  
ESC 1:20



P5

TÉRREO - L1

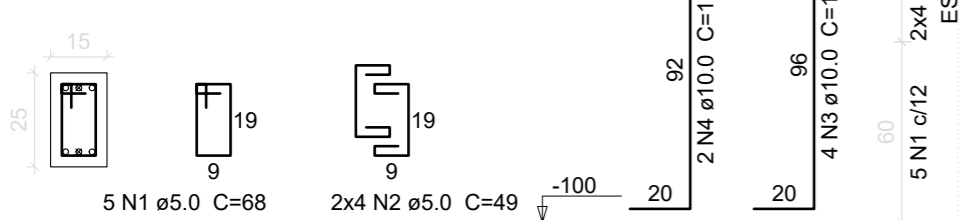
SEÇÃO  
ESC 1:20



P6

TÉRREO - L1

SEÇÃO  
ESC 1:20



### Relação do aço Pilaretes

AÇO	N	DIAM (mm)	QUANT	C.UNIT (cm)	C.TOTAL (cm)
CA60	1	5.0	60	68	4080
	2	5.0	96	49	4704
CA50	3	10.0	48	152	7296
	4	10.0	4	110	440

### Resumo do aço

AÇO	DIAM (mm)	C.TOTAL (m)	PESO + 10 % (kg)
CA50	10.0	77.4	52.5
CA60	5.0	87.9	14.9
PESO TOTAL (kg)			
CA50			52.5
CA60			14.9

Volume de concreto (C-25) = 0.45 m<sup>3</sup>  
Área de forma = 9.6 m<sup>2</sup>

### Relação do aço Sapatas

AÇO	N	DIAM (mm)	QUANT	C.UNIT (cm)	C.TOTAL (cm)
CA50	1	6.3	16	75	1200
	2	6.3	23	85	1955
CA50	3	6.3	20	90	1800
	4	6.3	102	100	10200
	5	6.3	77	110	8470
	6	6.3	8	95	760

### Resumo do aço

AÇO	DIAM (mm)	C.TOTAL (m)	PESO + 10 % (kg)
CA50	6.3	243.9	65.6
PESO TOTAL (kg)			
CA50			65.6

Volume de concreto (C-25) = 2.37 m<sup>3</sup>  
Área de forma = 7.05 m<sup>2</sup>



Obra:	<b>ESTRUTURA DE APOIO PARA CAMPO</b> Reserva Indígena Sede, Ipuçu/SC	Data:	10/2020
Resp. Técnico:	Tânia Mara Baldissera - Engenheira Civil - CREA/SC 133907-5	Escala:	Indicada
Município:	Ipuçu - SC	Área:	66,67m <sup>2</sup>
Especificação:	Sapatas Pilaretes Relação de aço	Desenho:	
		Prancha:	ES-02