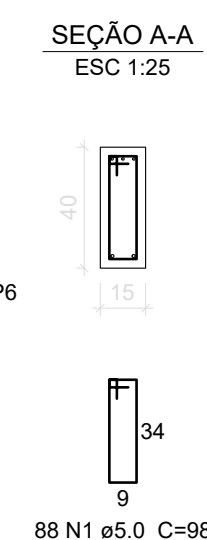
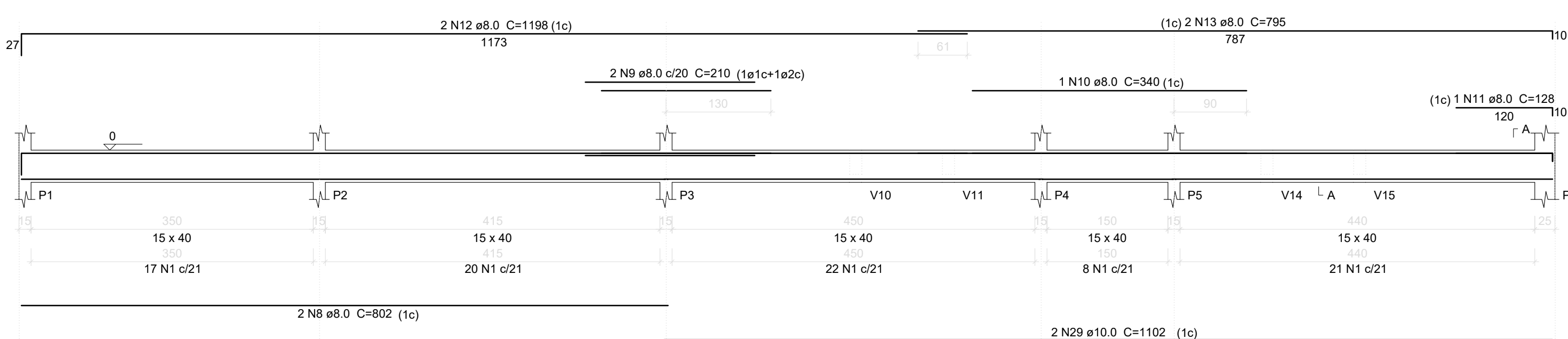
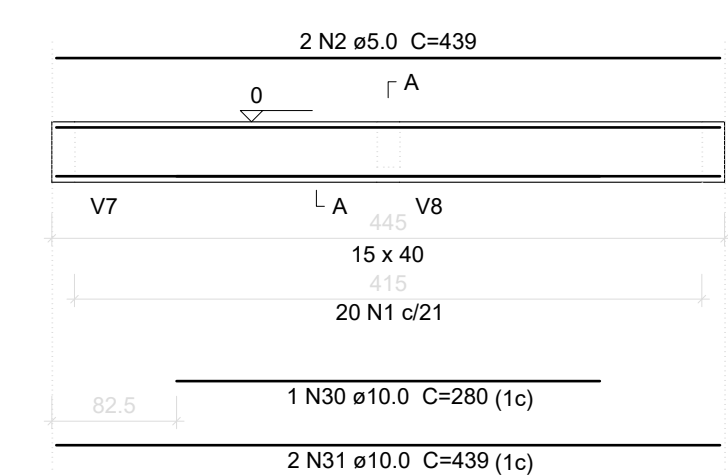


V1
ESC 1:50

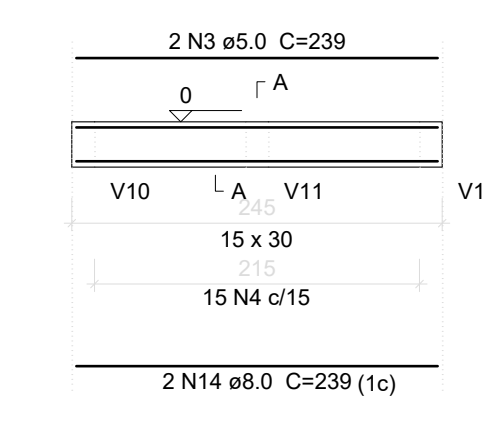


V2
ESC 1:50



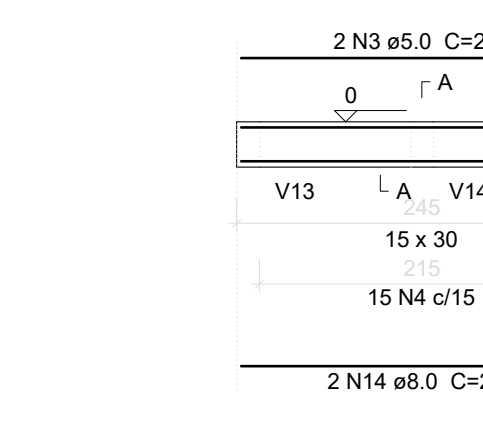
SEÇÃO A-A
ESC 1:25

V3
ESC 1:50



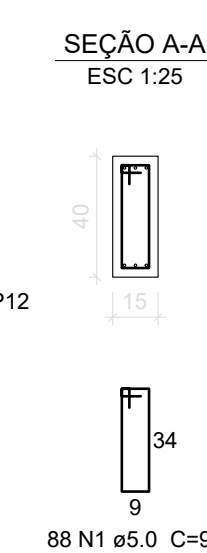
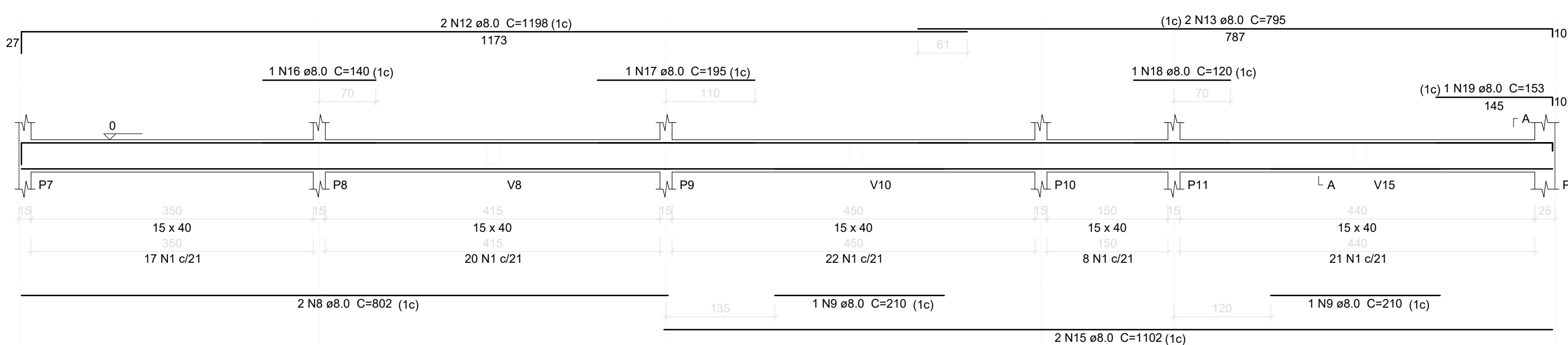
SEÇÃO A-A
ESC 1:25

V4
ESC 1:50

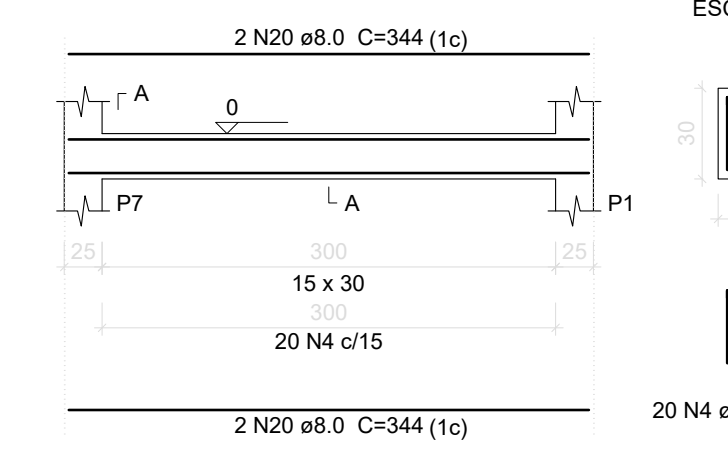


SEÇÃO A-A
ESC 1:25

V5
ESC 1:50

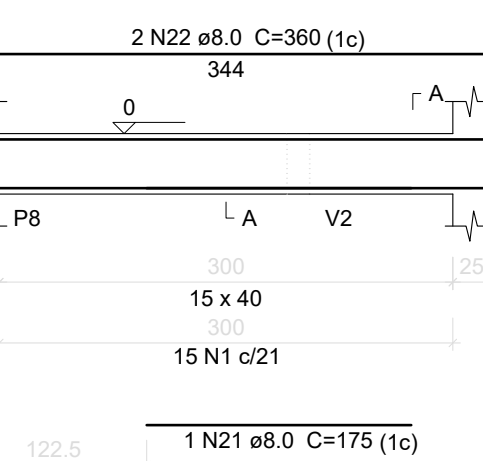


V6
ESC 1:50



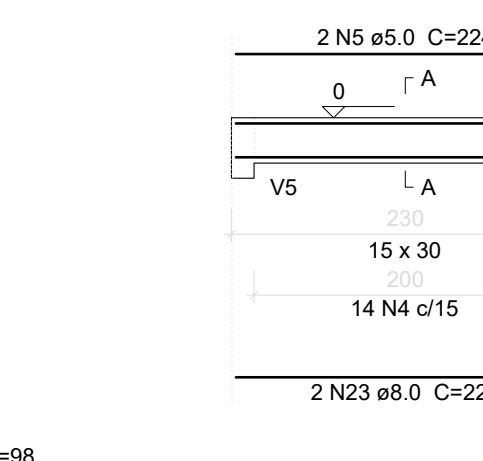
SEÇÃO A-A
ESC 1:25

V7
ESC 1:50



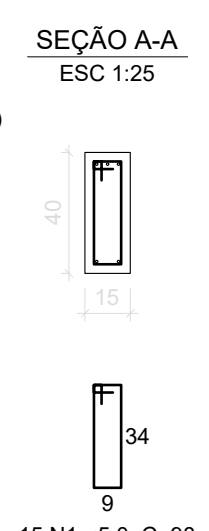
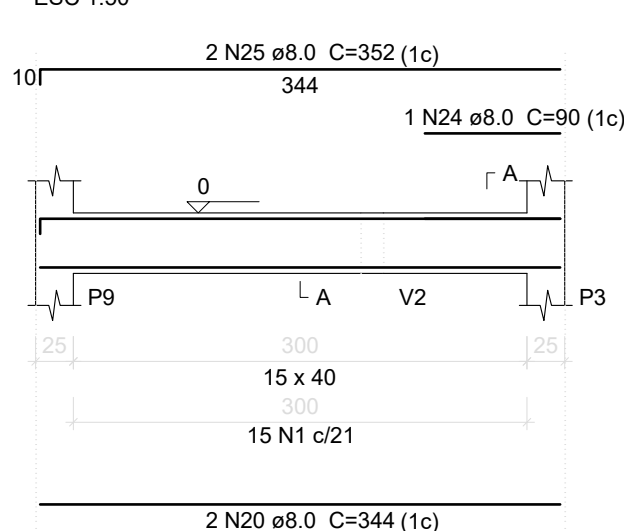
SEÇÃO A-A
ESC 1:25

V8
ESC 1:50

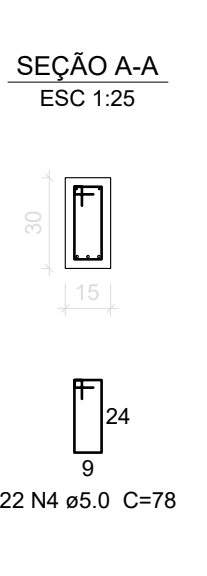
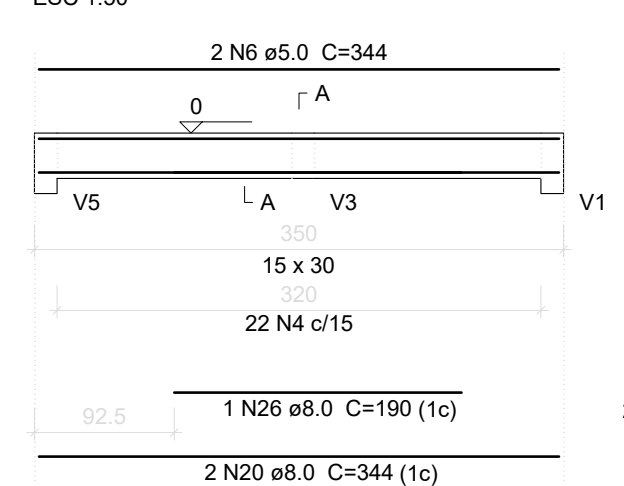


SEÇÃO A-A
ESC 1:25

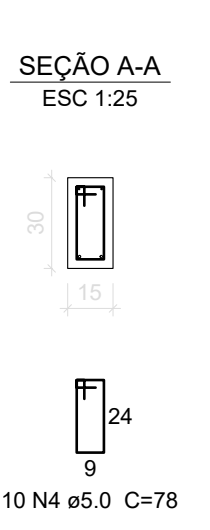
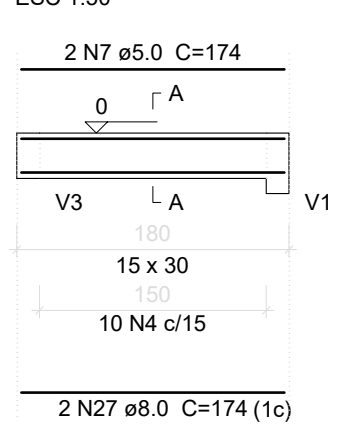
V9
ESC 1:50



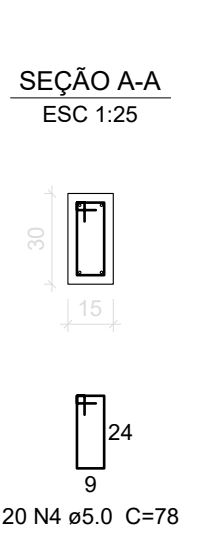
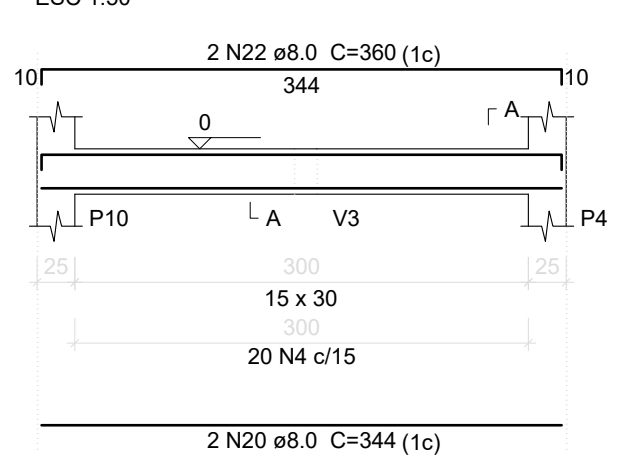
V10
ESC 1:50



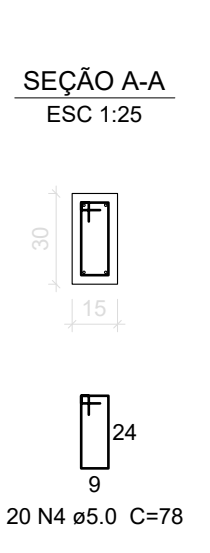
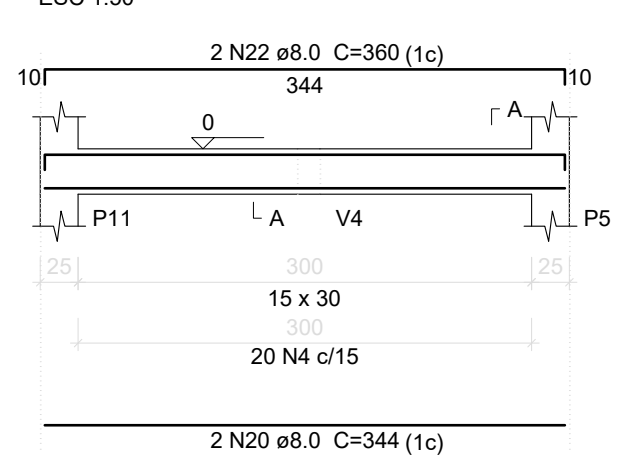
V11
ESC 1:50



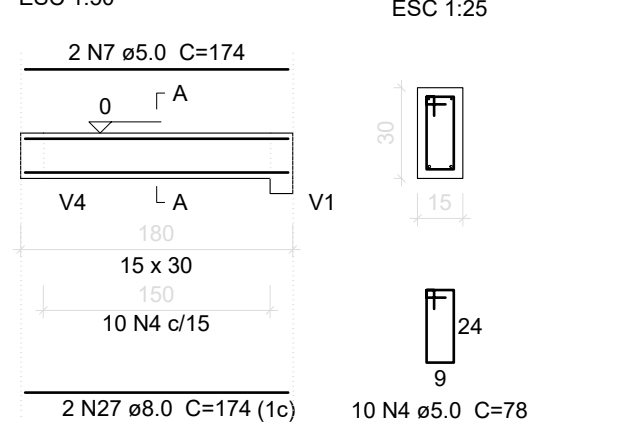
V12
ESC 1:50



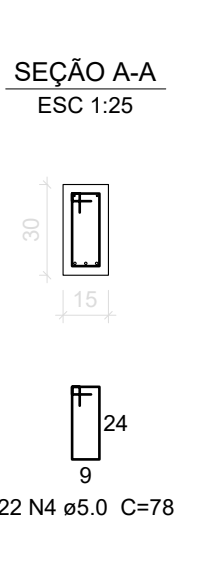
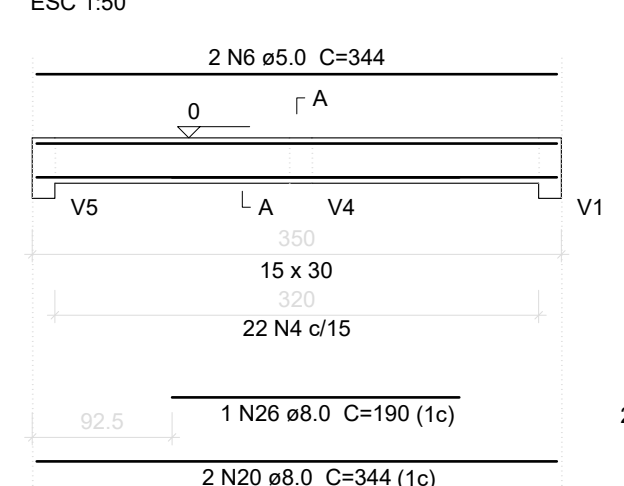
V13
ESC 1:50



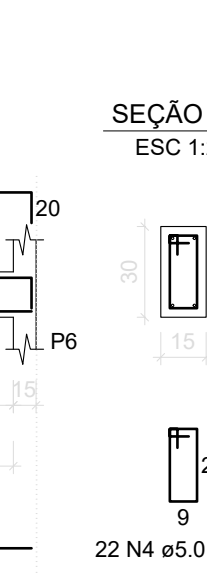
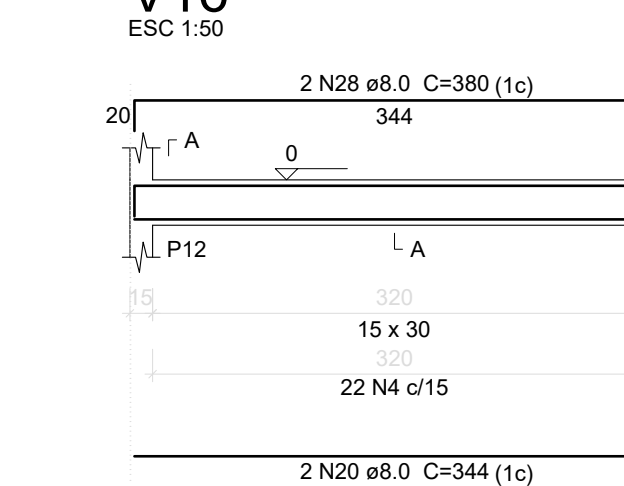
V14
ESC 1:50



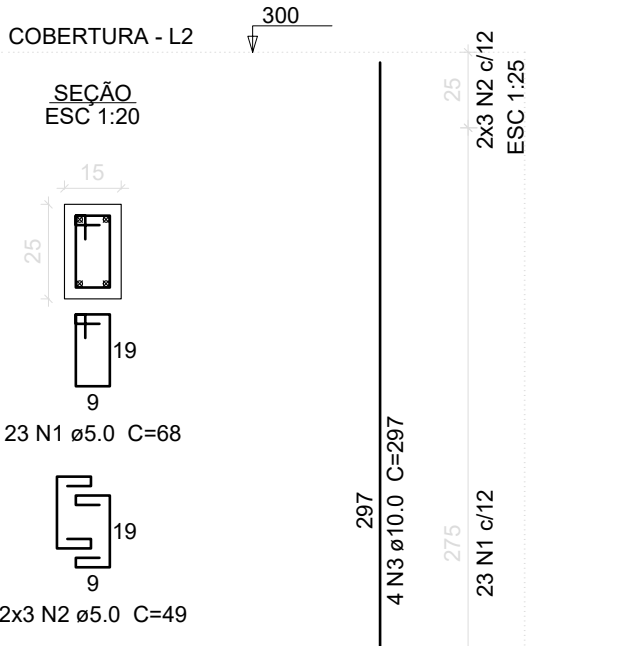
V15
ESC 1:50



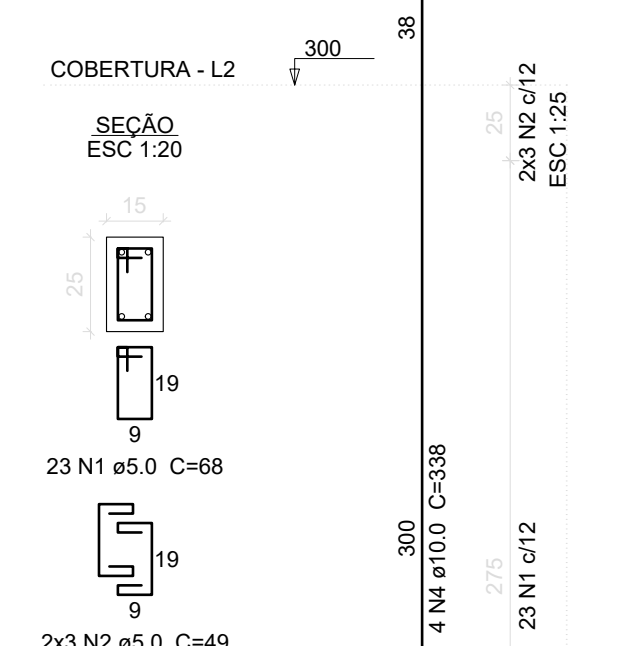
V16
ESC 1:50



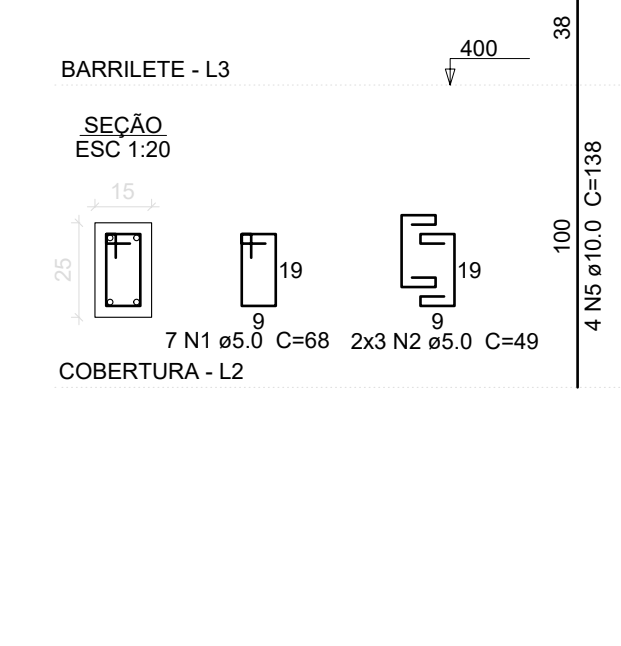
P1=P2=P3=P6=P7=P8=P9=
=P12



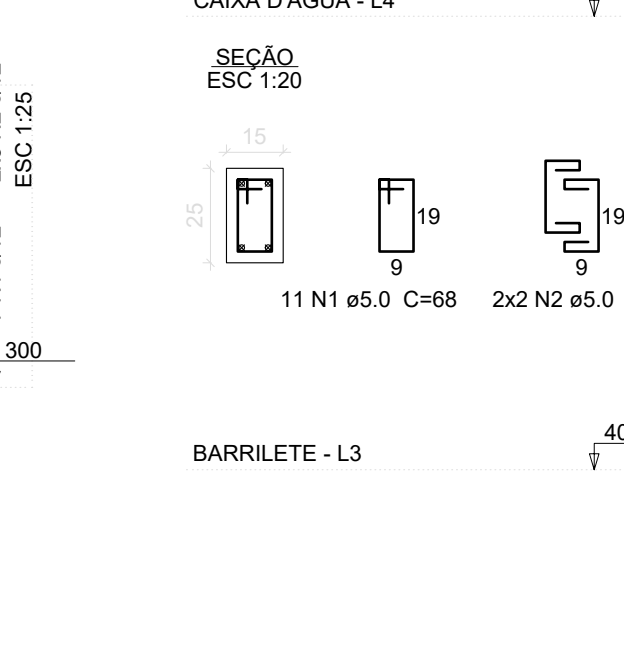
P4=P5=P10=P11



P4=P5=P10=P11



P4=P5=P10=P11



Relação do aço
Vigas pavimento térreo

AÇO	N	DIAM (mm)	QUANT	C.UNIT (cm)	C.TOTAL (cm)	
CA60	1	5.0	226	98	22148	
	2	5.0	2	439	878	
	3	5.0	4	239	956	
	4	5.0	190	78	14820	
	5	5.0	2	224	448	
	6	5.0	4	344	1376	
	7	5.0	4	174	696	
	CA50	8	8.0	4	802	3208
		9	8.0	4	210	840
		10	8.0	1	340	340
		11	8.0	1	128	128
12		8.0	4	1198	4792	
13		8.0	4	795	3180	
14		8.0	4	239	956	
15		8.0	2	1102	2204	
16		8.0	1	140	140	
17		8.0	1	195	195	

Relação do aço
Pilares

AÇO	N	DIAM (mm)	QUANT	C.UNIT (cm)	C.TOTAL (cm)
CA60	1	5.0	348	68	23664
	2	5.0	112	49	5488
CA50	3	10.0	32	297	9504
	4	10.0	16	338	5408
	5	10.0	16	138	2208
	6	10.0	16	147	2352

Resumo do aço

AÇO	DIAM (mm)	C.TOTAL (m)	PESO + 10% (kg)
CA50	10.0	194.8	132.1
CA60	5.0	291.6	49.4
PESO TOTAL (kg)			181.5
CA50		132.1	
CA60		49.4	

Resumo do aço

AÇO	DIAM (mm)	C.TOTAL (m)	PESO + 10% (kg)
CA50	8.0	278.7	120.9
CA50	10.0	33.7	22.8
CA60	5.0	413.3	70.1
PESO TOTAL (kg)			213.8
CA50		143.7	
CA60		70.1	

Volume de concreto (C-25) = 1.72 m³
Área de forma = 36.8 m²

Volume de concreto (C-25) = 4.4 m³
Área de forma = 70.92 m²

PROJETO ESTRUTURAL



Obra:	ESTRUTURA DE APOIO PARA CAMPO Reserva Indígena Sede, Ipuauçu/SC	Data:	10/2020
Resp. Técnico:	Tânia Mara Baldissera - Engenheira Civil - CREA/SC 133907-5	Escala:	Indicada
Município:	Ipuauçu - SC	Desenho:	
Especificação:	Vigas do pavimento térreo Pilares Relação de aço	Prancha:	ES-03