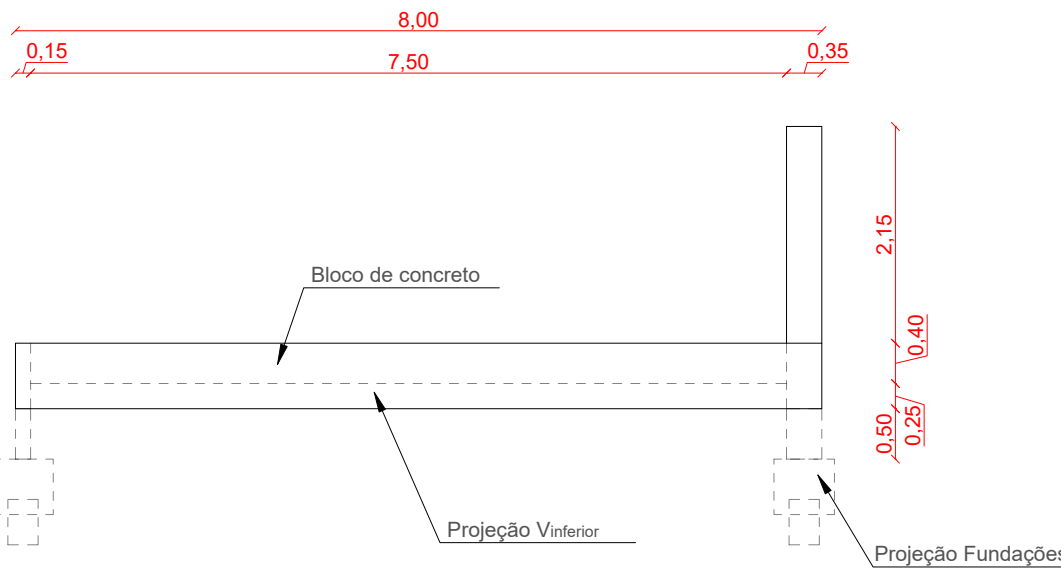


ACESSO UBS A PAVIMENTAR

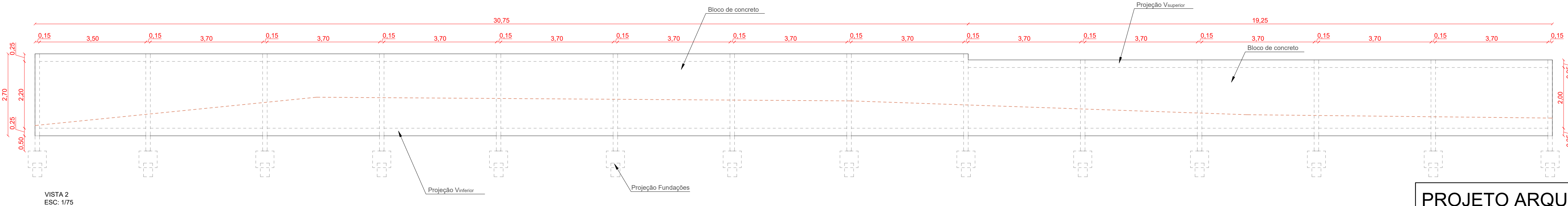
VISTA 2

CEMITÉRIO

PLANTA BAIXA
ESC: 1/75



VISTA 1
ESC: 1/75



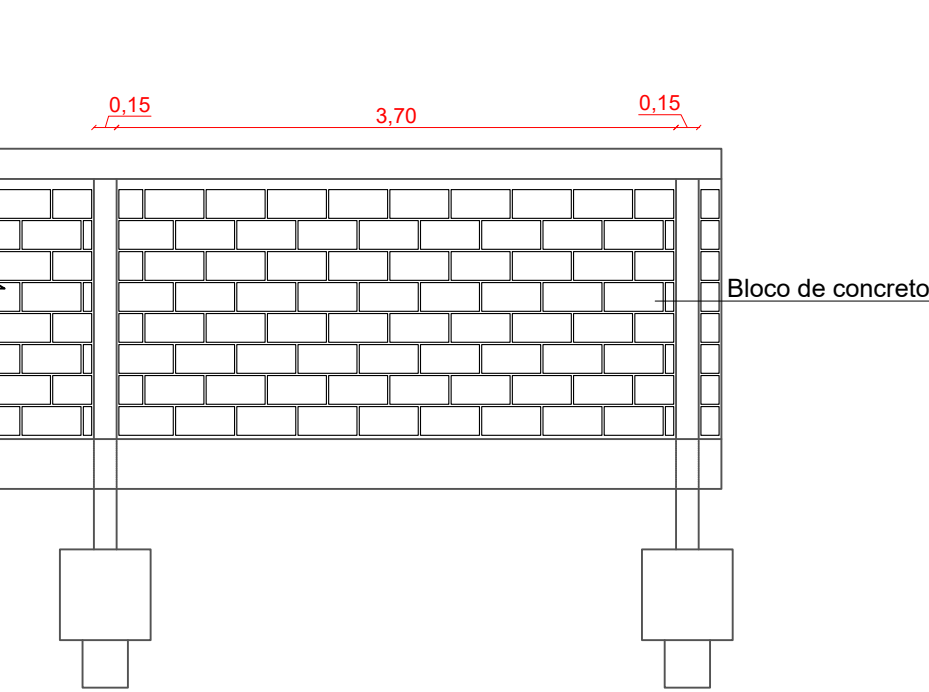
VISTA 1
RUA LORENZONI

C30
PLANTA
ESC 1:25

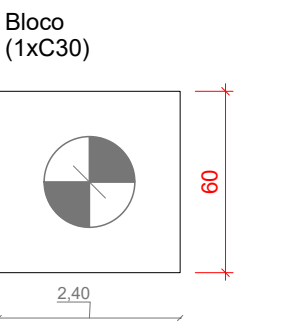
CORTE
ESC 1:25

Pilarete

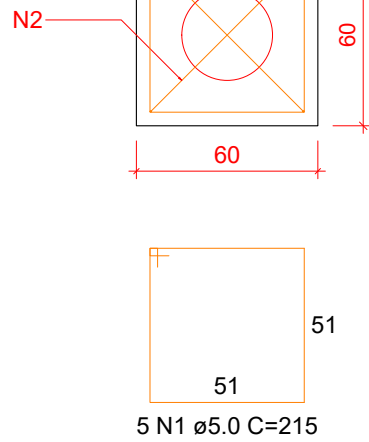
Pilares



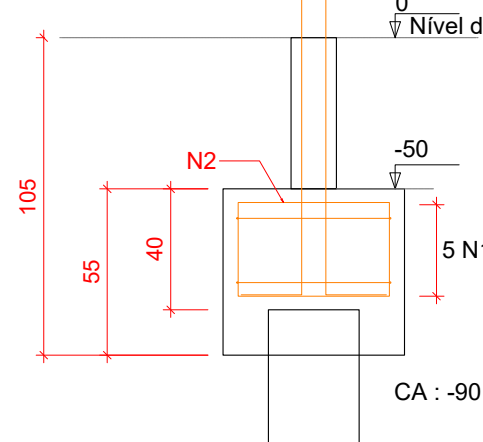
Detalhe - blocos de concreto
Esc: 1/50



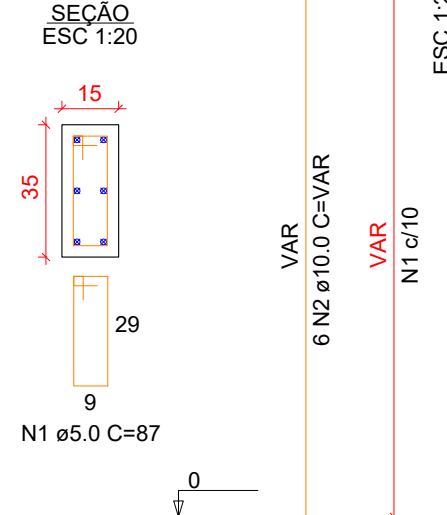
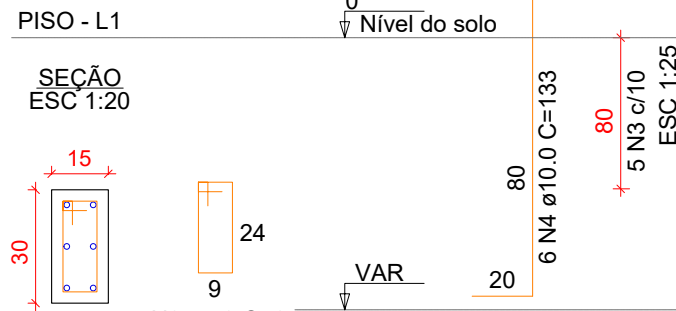
Legenda dos blocos
escala 1:25



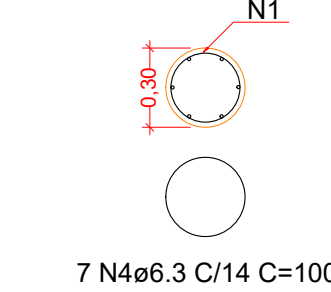
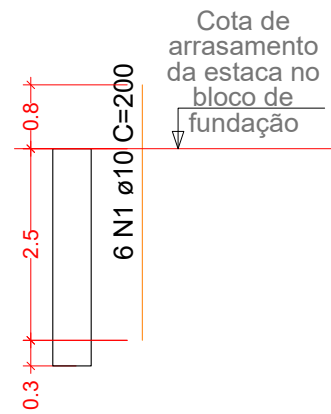
5 N1 ø5.0 C=215



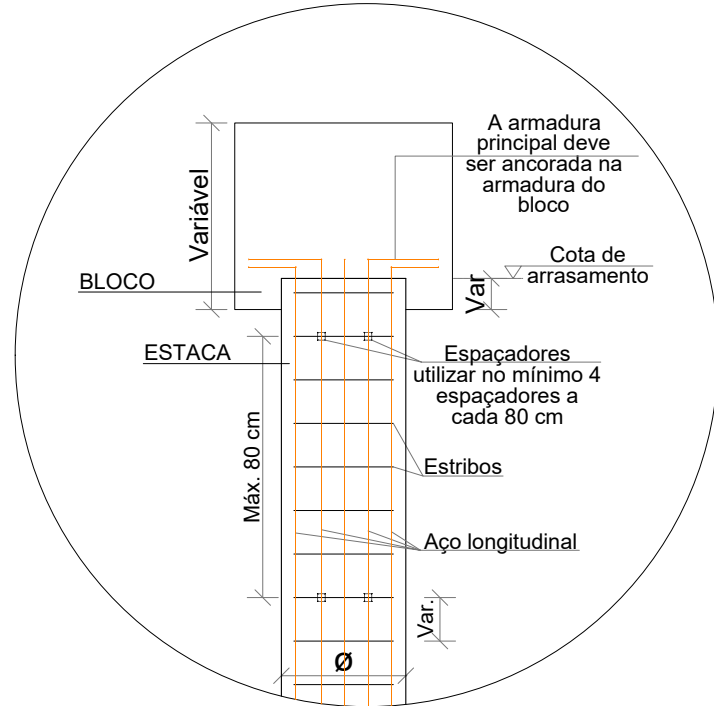
72 31
2 N2 ø5.0 C=217



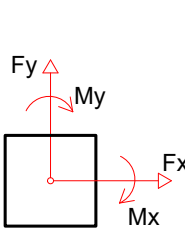
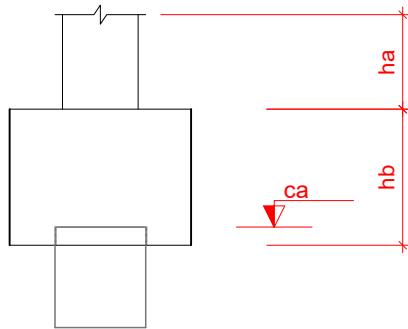
Estaca ø30cm



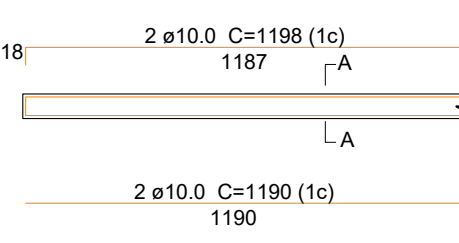
Utilizar cobrimento mínimo de 4,0cm



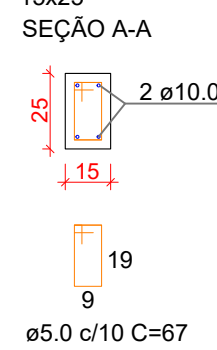
Estacas			
Simbologia	Nome	d (cm)	
	C30	30.00	



Vinferior/superior
15x25



Vinferior/superior
15x25



PROJETO ARQUITETÔNICO/ESTRUTURAL



Obra:	MURO NO CEMITÉRIO MUNICIPAL Rua Lorenzoni, s/nº - Ipuçu/SC	Data:	03/2024
Resp. Técnico:	Amanda Cunico Carneiro - CREA/SC 163.289-6	Escala:	Indicada
Município:	Ipuçu/SC - CNPJ: 95.993.028/0001-83	Área:	-
Especificação:	Planta baixa Vista 1 Vista 2 Detalhamento estrutura	Desenho:	Amanda
		Prancha:	01/01